



TABLE OF CONTENTS FOR HEALTH AFFAIRS COMMITTEE

Committee Meeting: 5/2/2012

Board Meeting: 5/3/2012
Austin, Texas

Robert L. Stillwell, Chairman
James D. Dannenbaum, Vice Chairman
Paul L. Foster
Printice L. Gary
Wallace L. Hall, Jr.

	Committee Meeting	Board Meeting	Page
Convene	3:15 p.m. <i>Chairman Stillwell</i>		
1. U. T. System Board of Regents: Review of Consent Agenda items, if any, referred for Committee consideration	3:15 p.m. Action	Action	140
2. U. T. Health Science Center - Tyler: Report on the Northeast Texas Consortium of Colleges and Universities (NETnet)	3:17 p.m. Report/Discussion <i>President Calhoun</i> <i>Mickey Slimp, Ed.D.</i> <i>NETnet</i>	Not on Agenda	141
3. U. T. System: Update on the Transformation in Medical Education (TIME) program	3:27 p.m. Report/Discussion <i>Dr. Shine</i> <i>Dr. Reyes</i> <i>Steve Lieberman,</i> <i>M.D.</i>	Not on Agenda	153
4. U. T. System: Discussion regarding health institutions' community service through outreach programs	3:37 p.m. Discussion <i>Dr. Shine</i> <i>Health Presidents</i>	Not on Agenda	156
5. U. T. System: Quarterly report on health matters of interest to the U. T. System, including changes in the health care delivery environment	4:10 p.m. Report/Discussion <i>Dr. Shine</i>	Not on Agenda	157
Adjourn	4:30 p.m.		

1. **U. T. System Board of Regents: Review of Consent Agenda items, if any, referred for Committee consideration**

(The proposed Consent Agenda is at the end of the book.)

2. **U. T. Health Science Center - Tyler: Report on the Northeast Texas Consortium of Colleges and Universities (NETnet)**

REPORT

President Calhoun and Mickey Slimp, Ed.D. the Northeast Texas Consortium of Colleges and Universities (NETnet) Executive Director, will give a presentation on NETnet using the PowerPoint presentation on the following pages.



The Northeast Texas Consortium of Colleges & Universities (NETnet)

Presenters:

Dr. Kirk Calhoun, President, U. T. Health Science Center - Tyler

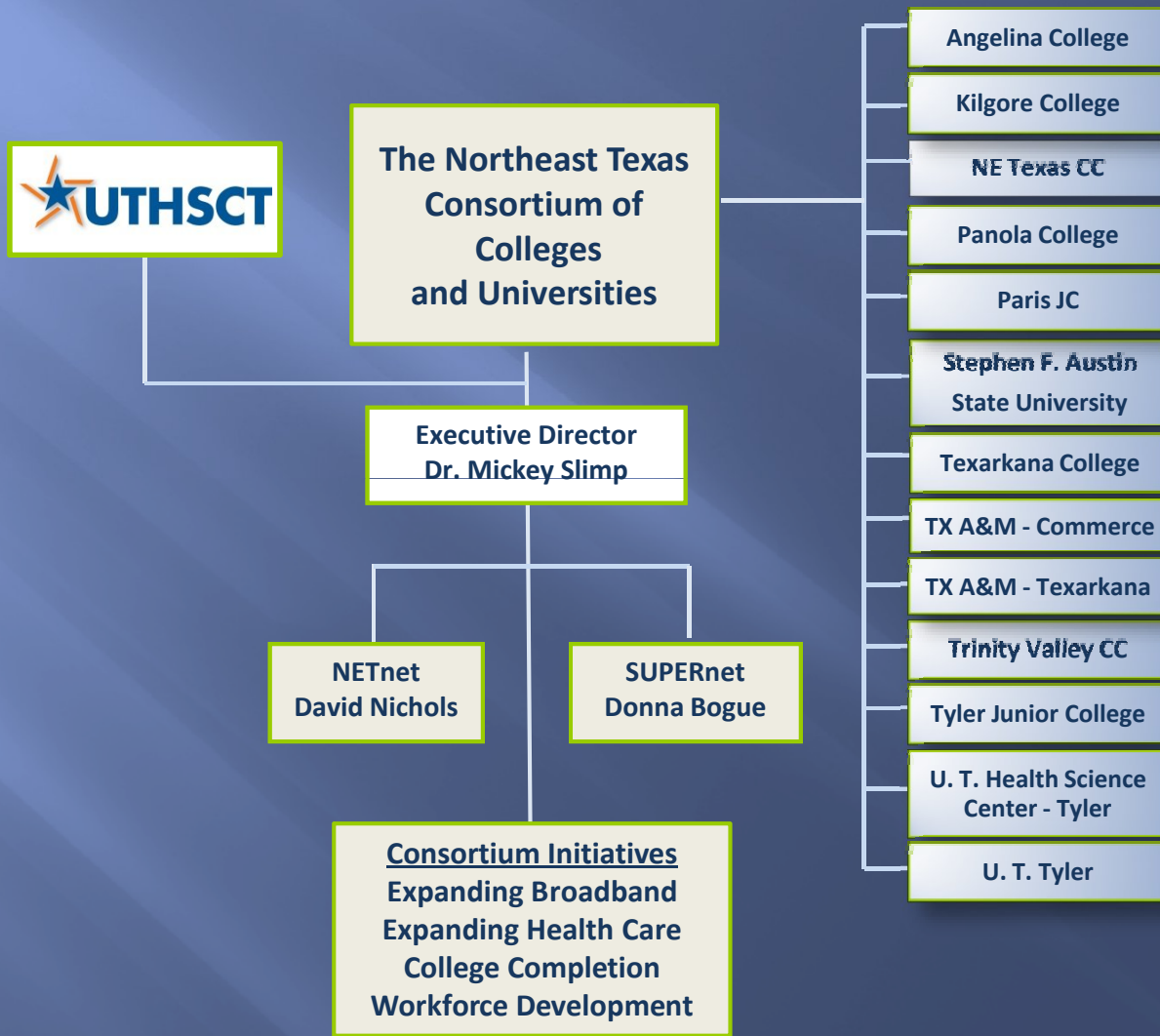
Dr. Mickey Slimp, NETnet Executive Director



HISTORY

- ❖ Created out of the Consortium of Northeast Texas College and University presidents
- ❖ Established through the efforts of former Lieutenant Governor Bill Ratliff and Agriculture Commissioner Todd Staples
- ❖ The mission – increasing access to educational and rural health programs for the people of Northeast Texas through collaboration and state-of-the-art technology

GOVERNANCE

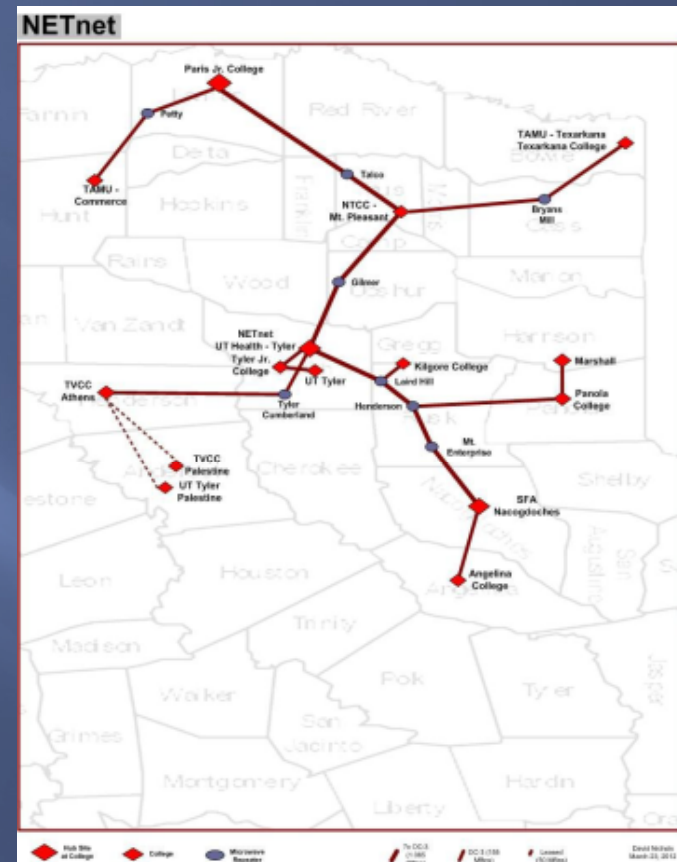


144

THE CONSORTIUM FOOTPRINT

The Northeast Texas Consortium of Colleges & Universities

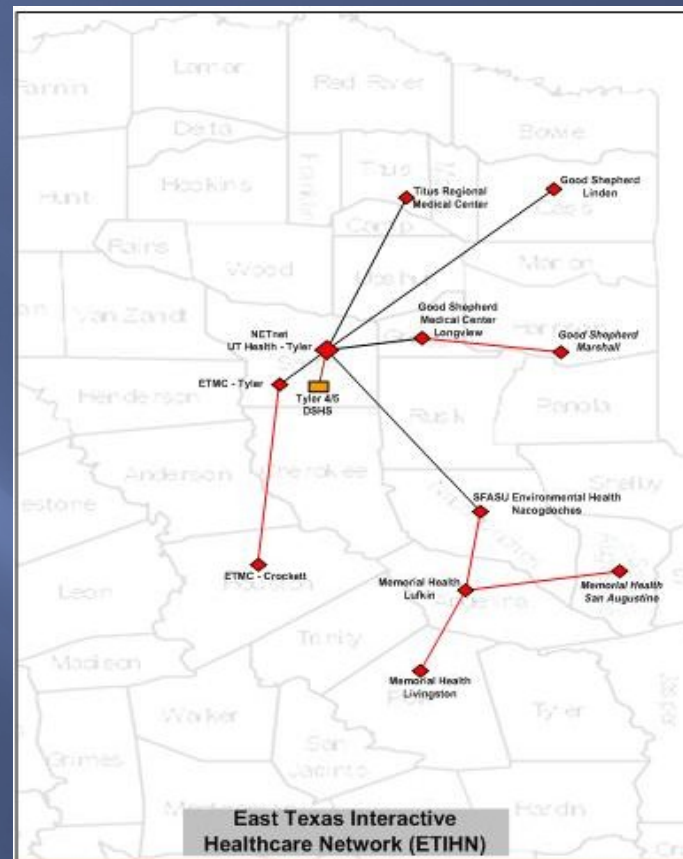
- ❖ 16 college and university campuses
- ❖ Serving the rural areas north of Houston & east of Dallas



MEDICAL PARTNERS

The East Texas Interactive Health Network

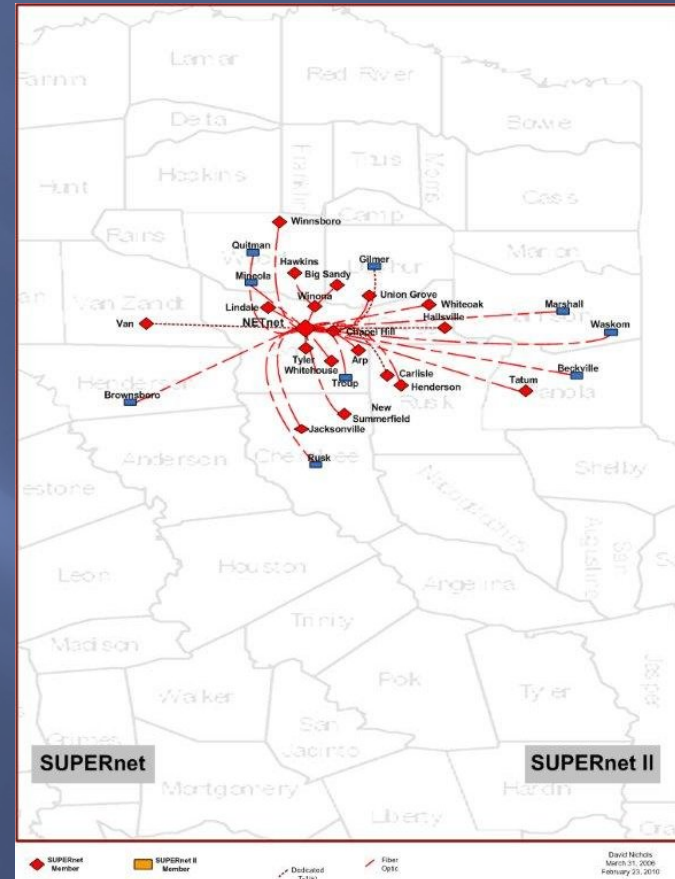
- ❖ Hospitals and medical providers in rural Northeast Texas
- ❖ Nursing and allied health programs at 2-year colleges and universities



PARTNERS IN COLLABORATION

SUPERnet – K-12 Consortium

- ❖ 31 school districts with 60,000 students
- ❖ The SUPERnet Virtual High School



Internet Course Activity

- ❖ Internet courses delivered via the Northeast Texas Consortium result in more than **30,000 enrollments per semester, equivalent to a 7,000-student college.**
- ❖ Consortium colleges & universities offered at a distance or in a “hybrid” format:
 - Over 800 unique undergraduate courses
 - Over 400 unique graduate courses
- ❖ NETnet connects over 40 educational providers to their primary or secondary Internet service, serving over 100,000 students.

TELEPRESENCE SUPPORT

PJC dedicates interactive video classroom

MARY MADEWELL

mary.madewell@parisjuniors.com

More students at the most remote Northeast Texas public school can get a jump on college thanks to an effort supported a decade ago by former Lt. Gov. and retired District 1 state Sen. Bill

finally dedicated an interactive video classroom Friday at Paris Junior College, making possible the further delivery of courses to other college campuses, hospitals and school districts.

The classroom, located in the Bobby Walters Applied Technologies Building, is the

"I think it is wonderful," Ratliff said Saturday upon learning the college consortium conceived during the time he served on the Senate Finance Committee and implemented during his tenure as lieutenant governor would now be used to offer dual credit courses to



RATLIFF

rural high school students. NETnet recognized Ratliff for his assistance in bringing colleges and universities together to implement the consortium at a banquet a decade ago at University of Texas Health Center in Tyles, the hub of the NETnet system.

the initial funding through the Texas Legislature."

Ratliff spoke about the consortium's vision in the early 1990s.

"In the beginning, we were only talking about college courses being shared between universities and community colleges," Ratliff



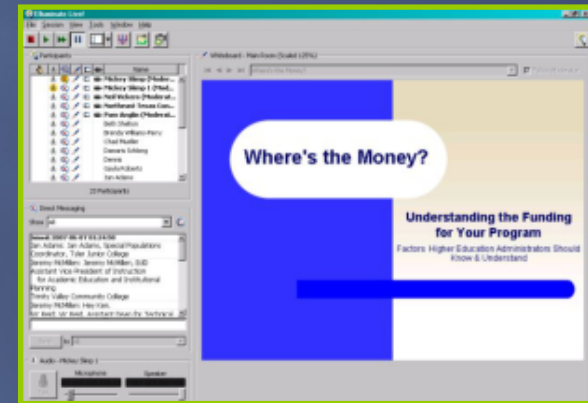
180 Sections/Semester



Serving 400 Classrooms

PROFESSIONAL DEVELOPMENT

- ❖ Best Practices in Distance Instruction and Student Support
- ❖ Community College Leadership
- ❖ Mathematics Teaching Methods
- ❖ Grant Development
- ❖ Medical Education
- ❖ Innovations in Education



GRANT-RELATED ACTIVITIES

- Federal Communications Commission Rural Health
- Broadband Technology Opportunity Program/Northeast Texas Medical & Education Fiber Network
- Medical Simulation/Trade Adjustment Assistance Community College Career Training
- Leadership Alliance
- Online Student Support
- Health Information Management
- SUPERnet/Dual Credit/eRate
- College Readiness/AmeriCorps
- Rural Utility Services Grant

2011 FEASIBILITY STUDY



THE NORTHEAST
TEXAS CONSORTIUM
of Colleges and Universities

Our Region, Our Future

The UTHSCT Bridge across Northeast Texas

THE UNIVERSITY OF TEXAS HEALTH SCIENCE CENTER AT TYLER



Through the Northeast Texas Consortium, our University of Texas institutions have streamlined their outreach to the rural population of this region.

By focusing on collaboration and technology, the Consortium continues to grow the knowledge, talents, and potential of our region's people. The investment in NETnet has enabled the colleges of our region to serve us for years to come.

Dr. Mickey Slimp, Executive Director
Northeast Texas Consortium

"Their tremendous impact on the educational opportunities for young people in our region has already and will continue to translate into a tremendous economic opportunity."

Dr. Kirk Calhoun, President
The University of Texas Health Science Center at Tyler

- ❖ Over 110 Community Leaders Interviewed
- ❖ 2 Community Summits
- ❖ Projects Identified in:
 - Rural Broadband Partnerships
 - Health Care and Telemedicine
 - College Readiness and Completion Agenda
 - Workforce Development



THE UNIVERSITY OF TEXAS
HEALTH SCIENCE CENTER AT TYLER

3. **U. T. System: Update on the Transformation in Medical Education (TIME) program**

REPORT

Executive Vice Chancellor Shine; Executive Vice Chancellor ad interim Reyes; and Steven Lieberman, M.D., Professor in the Department of Internal Medicine and Vice Dean for Academic Affairs at U. T. Medical Branch - Galveston, will report on the current status of the Transformation in Medical Education (TIME) program at U. T. System. See [Page 154](#) for an update on the TIME program and [Page 155](#) for a listing of the TIME Partnership Abstracts.

BACKGROUND INFORMATION

The TIME initiative aims to increase the effectiveness and relevance of physician education while shortening the time to receipt of the M.D. degree. The U. T. System Board of Regents approved \$4 million in Available University Funds (AUF) to fund the program on August 12, 2010.

Educators involved in premedical and medical education at U. T. System institutions have developed a new model for physician education that spans the traditional baccalaureate/medical school boundary. In addition to relevant basic and clinical sciences, this model incorporates four major elements: pre-health professions program, competency-based education, professional identity formation, and nontraditional fields of study.

Partnerships among six general academic and four health institutions of the U. T. System have formed for pilot program development. The four configurations, each of which includes at least one undergraduate institution and one medical school, grew from a combination of geographical, historical, and programmatic considerations. The pilot programs will include the four main elements but are expected to be structured differently based on individual campus priorities and preferences.



A multi-institutional initiative within The University of Texas System

AIM: The TIME initiative aims to increase the effectiveness and relevance of physician education while shortening its duration. Participating U. T. System academic and health institutions will partner to develop, implement, and assess pilot programs of fully revamped premedical and medical education programs, with an eye toward scalability beyond the pilot phase.

INITIATIVE-LEVEL UPDATES

COMPETENCY-BASED EDUCATION

- Common competency framework adopted (adapted from American residency model)
- “Transition milestones” (competencies required to move from General Academic Institutions (GAI) to Health Related Institutions (HRI)) finalized
 - Emphasis on *application* of science, clinical skills, communication skills, teamwork, professionalism, systems, evidence-based medicine, and population health
- Assessment Development Task Forces
 - Identify or develop tools for competency assessment
 - Focused topic areas
 - Systemwide recruitment

PROFESSIONAL IDENTITY FORMATION

- Systemwide task force: interdisciplinary, multiple institutions (including nonpartnership)
- Establishing common definitions, assessment tools, and educational experiences

EXTERNAL CONSULTATION

Molly Cooke, M.D. First author on Carnegie Foundation’s Flexner centennial report
President, American College of Physicians

PARTNERSHIP HIGHLIGHTS

A-PRIME (U. T. Brownsville, U. T. El Paso, U. T. Pan American, U. T. Medical Branch - Galveston, and U. T. Health Science Center - Houston)

- Multi-school clinical case development teams with faculty pairing
- Two-year assessment of noncognitive factors before application/acceptance

FAME (U. T. San Antonio and U. T. Health Science Center - San Antonio)

- Team-taught and Gateway courses
- Streamlining physics (2 courses + 2 labs) into single Biophysics course with School of Medicine faculty collaboration

PACT (U. T. Dallas and U. T. Southwestern Medical Center)

- First students to matriculate in Fall 2012 – outstanding applicant pool
- Integration into existing U. T. Southwestern Medical Center “Student Colleges”

SHAPE (U. T. Austin, U. T. Southwestern Medical Center, and U. T. Health Science Center - Houston)

- First students to matriculate in Spring 2013
- Special emphasis on interprofessional education

TRANSFORMATION IN MEDICAL EDUCATION (TIME)

A multi-institutional initiative within The University of Texas System

The goal of the TIME initiative is to increase the effectiveness and relevance of physician education while shortening its duration. Each of the four U. T. System medical schools is partnering with one or more undergraduate institutions to develop curricula incorporating four major elements: (1) A '**Pre-Health Professions Program**' for students to work interprofessionally to learn traditional, non-traditional, and clinical subjects and to demonstrate teamwork and professionalism. (2) **Competency-based education** (rather than time-based) in which advancement and degree completion is based upon demonstrated ability to apply knowledge and perform clinical skills. (3) **Professional identity formation** and maturation as essential complements to competency-based education and achieved through intentional experiences, reflection, and mentoring. (4) Education in **non-traditional fields**, both medically-related (e.g., clinical safety and effectiveness) and non-medical (e.g., philosophy, economics, management, culture, informatics). Four partnerships have been established:

SHAPE: U. T. Southwestern, Houston, Austin Professional Education (U. T. Austin, U. T. Southwestern Medical Center, and U. T. Health Science Center - Houston)

SHAPE is an accelerated medical education program developed as a partnership between the UTAUS, UTHSC-H, and UTSWMC medical campuses. Each year 60 UTAUS freshmen will be selected for early admission to a partnering medical school and will then complete their undergraduate work in three years. The two medical school partners will be integrated into professional identity formation activities and early clinical experiences at UTAUS and will host summer professional development opportunities on their campuses. All three schools will modify their curricula and create assessment tools to allow students to advance to medical school based on demonstrated competencies. An individualized flex year at each medical school will enable SHAPE students to acquire advanced research or professional skills and to grow as future physician-leaders.

PACT: Partnership in Advancing Clinical Transition (U. T. Dallas and U. T. Southwestern Medical Center)

The UT Partnership in Advancing Clinical Transition (UT PACT) is a curriculum development and pilot implementation program with the overall goal of achieving better integration of undergraduate and graduate studies in preparation for careers in health care. The UTD and the UTSWMC are the founding partners in the UT PACT. Initial efforts are focused on establishing an accelerated 6 or 7 year training program leading to both B.S. and M.D. degrees. A highly interactive program, with commencement of clinical skills training at the end of the first year and early professional identity formation, is fostered by the proximity of our campuses in the metroplex. Students transition to the medical school in the fourth year, maintaining ties to UTD from which electives in humanities, health care policy, and biomedical engineering will continue to broaden their perspective and skills as health care professionals.

FAME: Facilitated Acceptance to Medical Education (U. T. San Antonio and U. T. Health Science Center - San Antonio)

The goal of the FAME Program is to graduate physicians who have acquired exceptional knowledge of the sciences basic to medical practice, in addition to acquiring professional skills, and a keen understanding of the social, cultural, and behavioral aspects of health care. The students in this program will complete all requirements for a B.S. and M.D. degree in a total of seven (7) years. In addition to a new medical school curriculum, the students will participate in eight new courses which will be developed and team taught by UTSA and UTHSCSA faculty. These courses will include content that focuses on medically-related topics. The capstones of the FAME program are GATEWAY seminar courses. GATEWAY courses will expose students to the many aspects of patient care and to the unique needs of their community. The GATEWAY courses will focus not only on the biology and pathophysiology of the diseases and clinical issues, but will also incorporate a multidisciplinary approach that emphasizes the importance of communication, leadership, the role of health economics, and the social and cultural aspects of patient care.

A-PRIME: Accelerated Professional, Relevant, Integrated Medical Education (U. T. Brownsville, U. T. El Paso, U. T. Pan American, U. T. Medical Branch - Galveston, and U. T. Health Science Center - Houston)

The goal of the A-PRIME TIME partnership is to develop a model of physician education that is widely recognized for its innovative approach, educational effectiveness, and professionalism of its graduates through a curriculum that: is accessible to diverse groups of students and produces competent, compassionate physicians; fosters students to become caring and compassionate physicians by learning about a career in medicine while developing a professional identity early in their academic timetable; enables academic and medical institutions to jointly create a shared and more efficient, coordinated curriculum in a shortened timeframe; educates physicians trained and assessed in a range of cognitive, affective, and psycho-motor traits throughout their undergraduate and medical education; and, ultimately, achieves better health care outcomes for Texas.

May 2011

4. **U. T. System: Discussion regarding health institutions' community service through outreach programs**

DISCUSSION

Executive Vice Chancellor Shine and the presidents from the six U. T. System health institutions will lead a panel discussion on the health institutions' community service through various outreach programs.

5. **U. T. System: Quarterly report on health matters of interest to the U. T. System, including changes in the health care delivery environment**

REPORT

Executive Vice Chancellor Shine will report on health matters of interest to the U. T. System, including changes in the health care delivery environment.